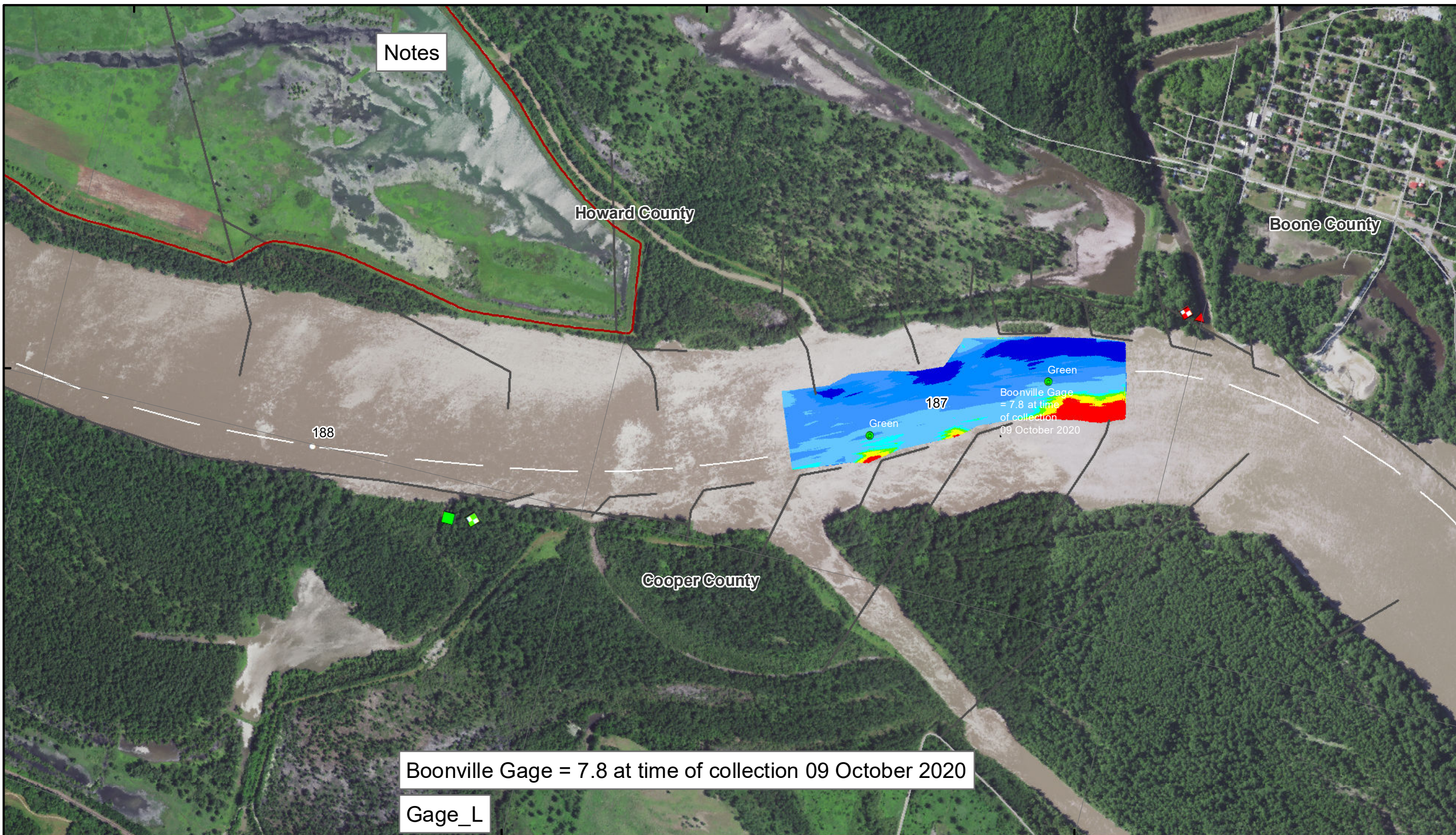


92°36'W

92°35'W

92°34'W



Notes

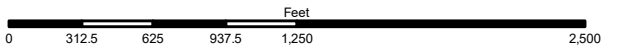
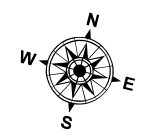
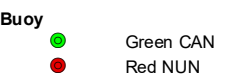
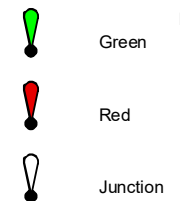
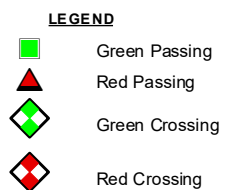
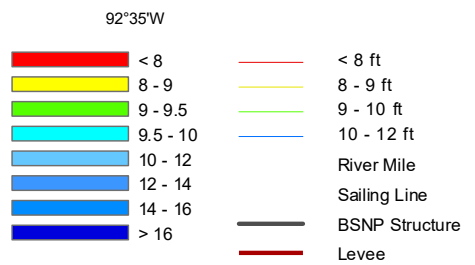
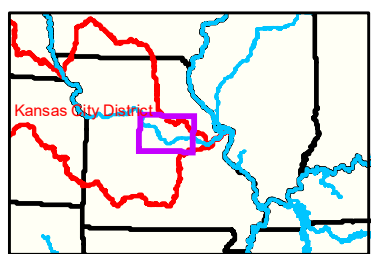
Howard County

Boone County

Cooper County

Boonville Gage = 7.8 at time of collection 09 October 2020

Gage\_L



**NOTES:**  
 Horizontal Coordinate System:  
 World Geodetic System of 1984 (WGS84), projected to the Universal Transverse Mercator (UTM) Zone 15 North. Distance units in U.S. Survey Feet  
 Vertical Datum:  
 Soundings are shown in feet and indicated depths are referenced to water surface at time of collection.  
 The information depicted on this map represents the results of a survey conducted on the date indicated and can only be considered to represent the general condition existing at that time.  
 The location of navigation aids are based on and provided by the U.S. Coast Guard.



Disclaimer: The U.S. Army Corps of Engineers and its personnel do not warrant the accuracy or completeness of the information provided herein. The information is provided for informational purposes only and should not be used for any purpose other than that for which it was intended. The U.S. Army Corps of Engineers and its personnel assume no liability for any errors or omissions in this information. The information is provided as is and without any warranty of any kind. The user assumes all responsibility for the use of this information. The U.S. Army Corps of Engineers and its personnel do not warrant the accuracy or completeness of the information provided herein. The information is provided for informational purposes only and should not be used for any purpose other than that for which it was intended. The U.S. Army Corps of Engineers and its personnel assume no liability for any errors or omissions in this information. The information is provided as is and without any warranty of any kind. The user assumes all responsibility for the use of this information.

KANSAS CITY DISTRICT MISSOURI RIVER AREA OFFICE	
Submitted By:	MIRAO
Reviewed By:	MIRAO
Approved By:	MIRAO

**Survey Information**  
 MO\_02\_LMR  
 MO\_02\_LMR\_20201009\_CS\_186\_7\_187\_2\_SORT  
 09 October 2020

**Sheet Number**  
 40 of 46